





## OUR STORY

Versatile has shaped modern farming as a leading manufacturer of tractors and tillage equipment. We were the first company to mass-produce articulated four-wheel drive tractors back in 1966, starting with the D100 and G100. Over the years, the Versatile product line has evolved but the same durability, reliability, and ease of service and maintenance that defined our legacy remains as strong as ever.

We are committed to producing quality products that stand the test of time. From research and development through engineering and production, we are focused on the needs of farmers and delivering equipment that you can rely on for years to come. Today's lineup includes articulating four-wheel drive tractors from 405 to 620; tracked units from 530 to 620; fixed-frame front-wheel assist tractor models from 175 to 365; as well as a complete line of tillage equipment.

## OUR PARTNERS

At Versatile we work with leading suppliers that are the best at what they do. We have strong partnerships with trusted companies such as Cummins, Cat® and Camso. By using reliable well-established vendors, we ensure that Versatile tractors have the best components and our team can focus on engineering the most efficient overall tractor. Using well known suppliers also means easier access to service, parts and maintenance. The continued relationships and integrations between our team and these suppliers has been instrumental in developing farm equipment that is proven to be low maintenance and dependable.

## OUR DEALERS

Versatile dealers are a part of your local community. We take pride in selecting and supporting a dealer network that provides the highest quality of sales and service. Versatile dealers have access to the latest product information, training and support to ensure that all customer needs are met. Our dealers are made up of friendly and knowledgeable staff and factory trained technicians that can handle everything from selecting the right tractor for an operation to ensuring it runs smoothly after it arrives on the farm.

## OUR DIFFERENCE

Every second counts. Versatile tractors are designed to get you in the field quicker and keep running longer. As you know, routine service can extend tractor life, maximize uptime and lower operating costs. Daily and regular maintenance on Versatile tractors can be done efficiently in a short period of time. For example, the hydraulic and fuel sight gauges on all articulated units are visible from the ground without opening side panels or removing any shields; the gullwing-style side panels open wide to provide excellent service access to all under-hood components; and planetary axle covers can be removed without removing the axles or tires.



**SIMPLY POWERFUL**  
SIMPLY VERSATILE

# DELTATRACK

MADE FOR THE TOUGHEST JOBS

The Versatile DeltaTrack is made for the biggest challenges on the farm. The 530, 580 and 620 DeltaTrack models are never short on power and combine the knowledge and expertise of Versatile engineers with several key industry partners like Cummins, Cat® and Camso. Featuring the largest cab in the segment, the most advanced undercarriage in the industry and convenient serviceability, the DeltaTrack is the perfect combination of power, comfort and reliability.



Models	530DT	580DT	620DT
Rated hp	530 hp	580 hp	616 hp
Peak hp	583 hp	638 hp	665 hp
Peak Torque	1,926 lb-ft	2,026 lb-ft	2,066 lb-ft
Engine	Cummins X15 (Stage V)		
Transmission	Cat® TA22 (16 forward, 4 reverse)		
Base Weight	58,850 lbs (26,694 kg)		

## PRODUCT HIGHLIGHTS

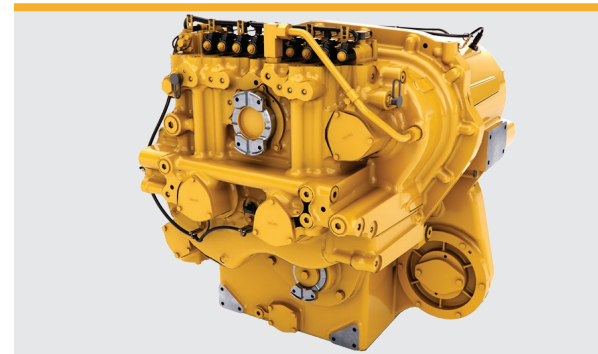
- 530, 580 and 620 models
- Largest cab in the industry
- Powerful X15 Cummins engine
- Heavy-duty Cat® TA22 transmission

# DELTATRACK FEATURES



## POWERFUL CUMMINS ENGINE

Cummins remains the exclusive engine supplier across the entire range of Versatile tractors. The powerful X15 engine delivers up to 10% power bulge at 1,900 rpm and can achieve up to 45% torque rise 1,500 rpm. The award-winning Cummins VGT (Variable Geometry Turbo) produces excellent torque response and is proven to be one of the most reliable turbo designs in the industry.



## DURABLE CAT® TRANSMISSION

The Cat® TA22 powershift transmission is programmable for auto-shifting and includes speed matching capabilities. Large selections of working gears are available to match almost any application. The DeltaTrack is designed to maintain drawbar pull across all gears, with full torque availability in 5th gear. This results in more consistent performance, smoother shifting and further operator comfort.



## CAMSO TRACK TECHNOLOGY

Versatile and Camso have built the most advanced undercarriage in the industry. The unique double oscillating bogie system pivots front-to-back and side-to-side. The bogie system and undercarriage work together for ideal weight distribution, reduced compaction, improved traction and a smooth ride. The DeltaTrack comes with the Camso 3500 series (530) or 6500 series (580, 620) in 30" or 36" (762 mm or 914 mm) track widths. The Camso 3500 track series balances reliability, quality and price. The 6500 track series feature unmatched durability and performance.



## LARGEST CAB IN THE INDUSTRY

The suspended cab provides one of the smoothest rides around and features a 10" (254 mm) monitor, front and rear intermittent wiper-washer system, front sun visor, four 12-volt outlets, four cup holders and multi-directional vents. **New for 2026**, a conveniently mounted auto-steer switch near the hydraulic controls provides easier access and improved operator convenience.

**DELUXE CAB** This package adds a heated and ventilated leather seat and training seat, leather steering wheel, 120-volt AC power outlet, dual beacons, monitor mounting bar, under hood work light and rear sun visor.

**DELUXE PRO CAB** Includes everything in the Deluxe Cab package with the addition of a 12" (305 mm) monitor and cell phone holder with two USB ports.



## ADVANCED HYDRAULICS

**New for 2026**, the hydraulic flow on the DeltaTrack has been increased. The standard hydraulic pump is now rated at 59 gpm (223 L/min). The advanced hydraulic system includes six hydraulic couplers, one ¾" coupler and a case drain. The hydraulic system as a whole is mounted low in a central configuration for easy access. The display monitor can increase or decrease the hydraulic flow and finger-tip controls help manage hydraulic functions. Options include two additional sets of ¾" couplers, extra case drain and increased flow 112 gpm (424 L/min) high flow hydraulic system.



## OUTBOARD PLANETARY AXLE

The legendary Versatile outboard planetary axle is known for its strength, simplicity and ease of service. The planetary gear system is designed to multiply torque, efficiently transferring power to the ground. Daily inspections can be done with a quick visual check of the oil level indicators located on the differentials. To extend the life of the tractor, the gears can be rotated by removing the outboard planetary covers without having to remove the axles or tracks.

# DELTATRACK FEATURES



## DRAWBAR

The drawbar pull point is directly behind the center articulation point, increasing the pulling capacity and reducing slippage by improving contact with the ground. The standard Category IV drawbar is available with optional heavy-duty drawbar support to increase the load capacity. An upgraded Category V drawbar is also available. Vertical load capacity ranges from 9,000-15,000 lbs (4,082-6,804 kg).

## SERVICE & MAINTENANCE

Get back in the field sooner with quick and simple daily maintenance. The grease fittings are accessible and hydraulic and fuel sight gauges are visible from the ground. The gullwing-style side panels open wide and the front grille swings open at ground level providing unmatched access. Separate oil chambers on the DeltaTrack eliminate potential cross-contamination reducing downtime if an implement failure occurs.

## VERSATILE CBX

Keep equipment running and stay on top of regular service. Versatile CBX logs ongoing performance and tracks upcoming and past maintenance schedules. The user interface is easy to understand and helps create a clear picture of machine status. Use the CBX system to plan ahead, increase uptime and take the guesswork out of equipment management.



## OPTIONS

The DeltaTrack is well-equipped with standard features. The following options are available to further enhance the tractor:

### Cab

- Deluxe and Deluxe Pro cab packages
- Monitor mounting bar
- Rear view camera
- 12" (305 mm) monitor
- Cell phone holder with two USB ports
- Satellite radio

### Lighting

- Deluxe package: 12 LED and two halogen, 30,000 lumens
- Deluxe Plus package: 19 LED and two halogen, 47,500 lumens

### Drawbar & Hitch

- PTO
- 3-point hitch
- Heavy-duty drawbar support
- Category V drawbar

### Hydraulics

- Power Beyond
- Two additional sets of 3/4" low pressure couplers
- Additional case drain (total of two)
- High flow hydraulic system - 112 gpm (424 L/min)

### ADDITIONAL OPTIONS

- Camso 6500 series tracks
- Dual beacons
- Toolbox
- Variable pitch reversing engine fan
- ISOBUS ready connection harness
- Universal Auto-Steer

# DELTATRACK SPECIFICATIONS

	530DT	580DT	620DT
<b>ENGINE</b>			
Engine Model	Cummins X15 (Stage V)		
Displacement	14.9 L (909 cid)		
Horsepower <sup>1</sup>	530 hp (395 kW)	580 hp (433 kW)	616 hp (459 kW)
Power Bulge	10% @ 1,900 rpm	10% @ 1,900 rpm	8% @ 1,900 rpm
Peak Horsepower	583 hp (435 kW)	638 hp (476 kW)	665 hp (496 kW)
Torque Rise	45% @ 1,500 rpm	40% @ 1,500 rpm	34% @ 1,500 rpm
Peak Torque	1,926 lb-ft (2,611 N·m)	2,026 lb-ft (2,747 N·m)	2,066 lb-ft (2,801 N·m)
Aspiration	Turbocharged and air-to-air aftercooled		
<b>TRANSMISSION</b>			
Powershift Transmission	Cat® TA22 transmission (16 forward, 4 reverse)		
Maximum Speed	21 mph (34 km/h)		
<b>HYDRAULICS</b>			
Type	Closed center load sensing system		
Standard Flow	59 gpm (223 L/min)		
High Flow (optional)	112 gpm (424 L/min)		
Implement Remotes	6 EHR		
Maximum System Pressure	2,900 psi (197 bar)		
<b>DRAWBAR</b>			
Drawbar (standard)	Category IV		
Drawbar (optional)	Heavy-duty support for Category IV; Category V		
Vertical Load Rating	Category IV: 9,000 lbs (4,082 kg) Category IV with heavy-duty support: 12,000 lbs (5,443 kg) Category V: 15,000 lbs (6,804 kg)		
<b>3-POINT HITCH &amp; PTO</b>			
3-Point Hitch <sup>2</sup> (optional)	Category IV; 15,000 lbs (6,804 kg)		
PTO <sup>3</sup> (optional)	1,000 rpm, 1¾", 20 spline shaft		

	530DT	580DT	620DT
<b>STEERING</b>			
Articulation Angle	33°		
Oscillation	12°		
<b>AXLES</b>			
Type	Heavy-duty outboard planetary		
Differential Lock	Optional	Standard	
Brakes	Dual hydraulic self-adjusting disc brakes, front and rear axle		
<b>CAB</b>			
Volume	175.5 cu. ft. (4.97 cu. m)		
Glass	85.9 sq. ft. (7.98 sq. m)		
<b>TRACKS</b>			
Tracks (Standard)	Camso 3500 tracks in 30" (762 mm) or 36" (914 mm) widths	Camso 6500 tracks in 30" (762 mm) or 36" (914 mm) widths	
Tracks (Optional)	Camso 6500 tracks in 30" (762 mm) or 36" (914 mm) widths	-	
<b>ELECTRICAL SYSTEM</b>			
Alternator	12V-200 amps		
Batteries	3 12V, 1,000 CCA		
<b>FUEL SYSTEM</b>			
Fuel Capacity	462 U.S. gal (1,749 L)		
DEF Capacity	24 U.S. gal (95 L)		
<b>WEIGHTS</b>			
Base Tractor Weight <sup>4</sup>	58,850 lbs (26,694 kg)		
Recommended Operating GVW	62,000 lbs (28,122 kg)		
Wheelbase	154" (3,900 mm)		

<sup>1</sup>SAE horsepower

<sup>2</sup>SAE capacity

<sup>3</sup>PTO and 3-point hitch can't be combined

<sup>4</sup>Estimated weight based on standard drawbar, no fuel, no operator, no ballast, no additional equipment

NOTE: Specifications are correct at time of publishing and are subject to change

# 4WD

## THE BEST PULLING MACHINE

Versatile four-wheel drives are known for pulling heavy implements, putting power to the ground and working through the most challenging conditions with ease. More than power, the four-wheel drives include premium features and options as well as the largest cab in the industry. Experience unmatched visibility in the field with 85.9 sq. ft. (7.98 sq. m) of window glass. This combination of power, durability and comfort establishes the four-wheel drive as a modern workhorse that can get the job done.



Models	405	430	460	530	580	620
Rated hp	400 hp	430 hp	460 hp	530 hp	580 hp	616 hp
Peak hp	450 hp	475 hp	512 hp	583 hp	638 hp	665 hp
Peak Torque	1,600 lb-ft	1,693 lb-ft	1,696 lb-ft	1,926 lb-ft	2,026 lb-ft	2,066 lb-ft
Engine	Cummins X12 (Stage V)			Cummins X15 (Stage V)		
Transmission	Cat® TA19 (16 forward, 4 reverse)			Cat® TA22 (16 forward, 4 reverse)		
Base Weight	31,500 lbs (14,288 kg)			42,000 lbs (19,051 kg)		

### PRODUCT HIGHLIGHTS

- 405, 430, 460, 530, 580 and 620 models
- Largest cab in the industry
- Powerful X15 and X12 Cummins engines
- Heavy-duty TA22 and TA19 Cat® transmissions

# 4WD FEATURES



## POWERFUL CUMMINS ENGINE

Designed to deliver industry-leading performance, Cummins remains the exclusive engine supplier across the entire range of Versatile tractors. Versatile four-wheel drives are powered by either a Cummins X15 or X12 engine.

**CUMMINS X15 (530, 580, 620)** The powerful X15 delivers up to 10% power bulge at 1,900 rpm and can achieve up to 45% torque rise 1,500 rpm.

**CUMMINS X12 (405, 430, 460)** The 11.8 L six-cylinder turbocharged engine delivers superior performance using advanced combustion technology. The X12 has a 13% power bulge at 1,800 rpm and can reach a 60% torque rise at 1,400 rpm.



## DURABLE CAT® TRANSMISSION

Versatile four-wheel drives include smooth-shifting Cat® powershift transmissions (16 forward, 4 reverse). The transmissions have robust protection systems and are proven in the field resulting in long-lasting and reliable operation. Large frame models (530, 580, 620) use the TA22 and narrow frame models (405, 430, 460) feature the TA19. Both transmissions are programmable for auto-shifting and include speed matching capabilities.

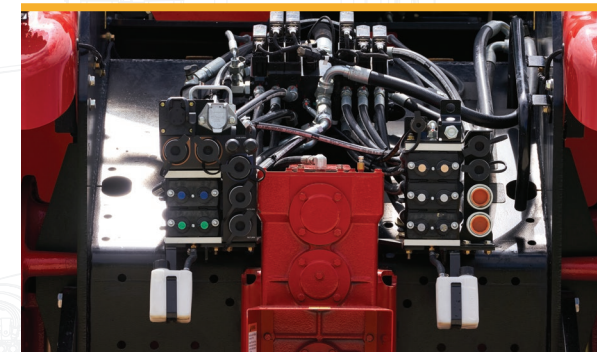


## LARGEST CAB IN THE INDUSTRY

Experience the largest cab in the industry with 85.9 sq. ft. (7.98 sq. m) of window glass for unmatched field visibility. The standard cab includes a 10" (254 mm) monitor, front and rear intermittent wiper washer system, front sun visor, four 12-volt outlets, four cup holders and multi-directional vents. **New for 2026**, a conveniently mounted auto-steer switch near the hydraulic controls provides easier access and improved operator convenience.

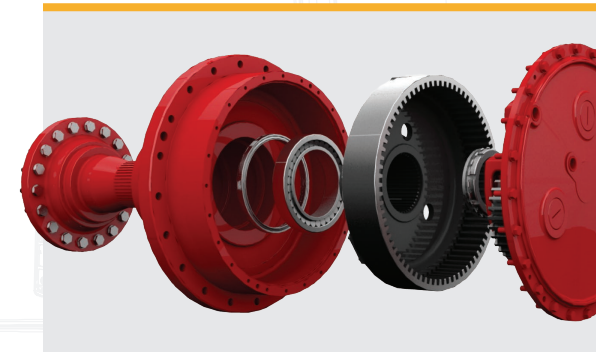
**DELUXE CAB** This package includes a deluxe semi-active cloth seat and training seat, 120-volt AC power outlet, dual beacons, monitor mounting bar, under hood work light and rear sun visor.

**DELUXE PRO CAB** Includes everything in the Deluxe Cab package plus an upgraded 12" (305 mm) monitor and cell phone holder with two USB ports.



## ADVANCED HYDRAULICS

**New for 2026**, the hydraulic flow on the 4WD has been increased. The standard hydraulic pump is now rated at 59 gpm (223 L/min). The four-wheel drives come complete with six hydraulic couplers, one 3/4" coupler and a case drain. The hydraulic system is center located and mounted low for easy access. Finger-tip controls manage the hydraulic functions and hydraulic flow can be seamlessly increased and decreased using the display monitor. Options include two additional sets of 3/4" couplers, extra case drain and a increased 112 gpm (424 L/min) high flow hydraulic system.



## OUTBOARD PLANETARY AXLE

The legendary Versatile outboard planetary axle is known for its strength, simplicity and ease of service. The planetary gear system is designed to multiply torque and transfer power to where it matters the most, the ground. The planetary axle covers can be easily removed without removing the axles or tire to rotate the gears, increasing longevity and uptime. Daily inspections are simple with a quick visual check of the oil level indicators located on the differentials.



## DRAWBAR

Versatile four-wheel drives are designed to maximize pulling capacity. The drawbar pulls from the center of the four-wheel drive, which reduces slippage and improves contact with the ground. The standard Category IV drawbar can be set up as a swinging drawbar or locked in place. Increase the load capacity with an optional heavy-duty drawbar support or upgraded Category V drawbar.

# 4WD FEATURES



## SERVICE & MAINTENANCE

Versatile tractors are designed with ease of service in mind. Daily maintenance only takes a moment with accessible grease fittings and hydraulic oil and fuel sight gauges that are visible from the ground. The four-wheel drive has unmatched access with a front grille and gullwing-style side panels that open wide and provide ground-level service. The separate oil chambers eliminate potential cross-contamination reducing downtime if an implement failure occurs.

## VERSATILE CBX

Monitor equipment remotely with real-time results using Versatile CBX. Access to equipment history, mapped location, idle time and fuel level results in better business decisions. Be in the know with custom, real-time email and text message alerts about key tractor issues. The CBX system can be accessed from a phone, tablet, or computer – any device with a Wi-Fi or data connection.

## OPTIONS

The four-wheel drive is well-equipped with standard features. The following options are available to further enhance the tractor:

### Cab

- Deluxe and Deluxe Pro cab packages
- Leather seat and steering wheel
- Monitor mounting bar
- Rear view camera
- 12" (305 mm) monitor
- Cell phone holder with two USB ports
- Satellite radio
- Suspended cab

### Lighting

- Deluxe package: 12 LED and two halogen, 30,000 lumens
- Deluxe Plus package: 19 LED and two halogen, 47,500 lumens

### Drawbar & Hitch

- PTO
- 3-point hitch
- Heavy-duty drawbar support
- Category V drawbar

### Hydraulics

- Power Beyond
- Two additional sets of ¾" low pressure couplers
- Additional case drain (total of two)
- High flow hydraulic system - 112 gpm (424 L/min)

### ADDITIONAL OPTIONS

- Dual beacons
- Toolbox
- Variable pitch reversing engine fan
- ISOBUS ready connection harness
- Universal Auto-Steer



# 4WD SPECIFICATIONS

	405	430	460	530	580	620
<b>ENGINE</b>						
<b>Engine Model</b>	Cummins X12 (Stage V)			Cummins X15 (Stage V)		
<b>Displacement</b>	11.8 L (720 cid)			14.9 L (909 cid)		
<b>Horsepower<sup>1</sup></b>	400 hp (298 kW)	430 hp (320 kW)	460 hp (343 kW)	530 hp (395 kW)	580 hp (433 kW)	616 hp (459 kW)
<b>Power Bulge</b>	13% @ 1,800 rpm	11% @ 1,800 rpm	11% @ 1,800 rpm	10% @ 1,900 rpm	10% @ 1,900 rpm	8% @ 1,900 rpm
<b>Peak Horsepower</b>	450 hp (336 kW)	475 hp (354 kW)	512 hp (382 kW)	583 hp (435 kW)	638 hp (476 kW)	665 hp (496 kW)
<b>Torque Rise</b>	60% @ 1,400 rpm	51% @ 1,400 rpm	51% @ 1,400 rpm	45% @ 1,500 rpm	40% @ 1,500 rpm	34% @ 1,500 rpm
<b>Peak Torque</b>	1,600 lb-ft (2,169 N·m)	1,693 lb-ft (2,296 N·m)	1,696 lb-ft (2,300 N·m)	1,926 lb-ft (2,611 N·m)	2,026 lb-ft (2,747 N·m)	2,066 lb-ft (2,801 N·m)
<b>Aspiration</b>	Turbocharged and air-to-air aftercooled					
<b>TRANSMISSION</b>						
<b>Powershift Transmission</b>	Cat® TA19 transmission (16 forward, 4 reverse)			Cat® TA22 transmission (16 forward, 4 reverse)		
<b>Maximum Speeds</b>	22 mph (35 km/h)			23.5 mph (40 km/h)		
<b>HYDRAULICS</b>						
<b>Type</b>	Closed center load sensing system					
<b>Standard Flow</b>	59 gpm (223 L/min)					
<b>High Flow (optional)</b>	112 gpm (424 L/min)					
<b>Implement Remotes</b>	6 EHR					
<b>Maximum System Pressure</b>	2,900 psi (197 bar)					
<b>DRAWBAR</b>						
<b>Drawbar (standard)</b>	Category IV					
<b>Drawbar (optional)</b>	Heavy-duty drawbar support for Category IV			Heavy-duty drawbar support for Category IV; Category V		
<b>Vertical Load Rating</b>	Category IV: 6,000 lbs (2,722 kg) Category IV with heavy-duty drawbar support: 9,000 lbs (4,082 kg)			Category IV: 9,000 lbs (4,082 kg) Category IV with heavy-duty drawbar support: 12,000 lbs (5,443 kg) Category V: 15,000 lbs (6,804 kg)		
<b>3-POINT HITCH &amp; PTO</b>						
<b>3-Point Hitch<sup>2</sup></b>	Category IVN / III; 13,000 lbs (5,897 kg)			Category IV; 15,000 lbs (6,804 kg)		
<b>PTO<sup>3</sup></b>	1,000 rpm, 1¼", 20 spline shaft					

	405	430	460	530	580	620
<b>STEERING</b>						
<b>Articulation Angle</b>	28°, 31°, 33°, 38°			31°, 38°, 42°		
<b>Oscillation</b>	12°					
<b>AXLES</b>						
<b>Type</b>	Heavy-duty outboard planetary					
<b>Differential Lock</b>	Optional			Standard		
<b>Brakes</b>	Dual hydraulic self-adjusting disc brakes, front and rear axle					
<b>CAB</b>						
<b>Volume</b>	175.5 cu. ft. (4.97 cu. m)					
<b>Glass</b>	85.9 sq. ft. (7.98 sq. m)					
<b>ELECTRICAL SYSTEM</b>						
<b>Alternator</b>	12V-200 amps					
<b>Batteries</b>	3 12V, 1,000 CCA					
<b>FUEL SYSTEM</b>						
<b>Fuel Capacity</b>	250 U.S. gal (946 L)			343 U.S. gal (1,298 L)		
<b>DEF Capacity</b>	25 U.S. gal (95 L)			25 U.S. gal (95 L)		
<b>WEIGHTS</b>						
<b>Base Tractor Weight<sup>4</sup></b>	31,500 lbs (14,288 kg)			42,000 lbs (19,051 kg)		
<b>Recommended Operating GVW</b>	40,000 lbs (18,144 kg)	43,000 lbs (19,504 kg)	46,000 lbs (20,865 kg)	53,000 lbs (24,040 kg)	58,000 lbs (26,308 kg)	62,000 lbs (28,123 kg)
<b>Wheelbase</b>	135" (3,429 mm)			154" (3,900 mm)		

<sup>1</sup>SAE horsepower

<sup>2</sup>SAE capacity

<sup>3</sup>PTO and 3-point hitch can't be combined

<sup>4</sup>Estimated weight based on standard drawbar, no fuel, no operator, no ballast, no additional equipment

NOTE: Specifications are correct at time of publishing and are subject to change

# MFWD

## EXPERIENCE TRUE PRODUCTIVITY

Powerful front-wheel assist tractors have been manufactured at Versatile since 1993. The Cummins QSL9 engine is matched to a powershift transmission which offers a wide range of working gears to meet challenging jobs on the farm. Versatile MFWD tractors are available in 275 hp, 295 hp, 315 hp, 335 hp and 365 hp. Premium options such as a 12" touch-screen monitor, dual beacons, and LED lighting packages are available on all MFWD models.

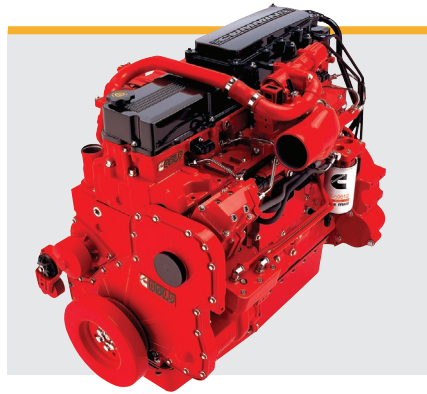


Models	275	295	315	335	365
Rated hp	275 hp	295 hp	315 hp	335 hp	365 hp
Peak hp	300 hp	320 hp	340 hp	370 hp	400 hp
Peak Torque	945 lb-ft	985 lb-ft	995 lb-ft	1,130 lb-ft	1,199 lb-ft
Engine	Cummins QSL9 (Tier IV Final)				
Transmission	Powershift (16 forward, 9 reverse)				
Base Weight	27,660 lbs (12,546 kg)				

### PRODUCT HIGHLIGHTS

- Durable and proven powertrain
- Largest cab in the segment
- Easy-to-use controls
- Advanced hydraulic system

# MFWD FEATURES



## POWERTRAIN

The powertrain is made up of a Cummins QSL9 engine, powershift transmission, heavy drive shafts, inboard planetary axles and large rear differentials. The powertrain is assembled as a single piece, which provides superior structural strength from the engine through the rear axle. This design extends longevity under the heaviest loads.

**ENGINE** The Cummins engine is built to balance strength, productivity and fuel efficiency. The turbocharged engine is designed to hold its power bulge for a longer period of time, providing more sustained performance in high-demand situations.

**TRANSMISSION** The transmission (16 forward, 9 reverse) includes speed matching capabilities and is programmable for auto-shifting. The 335 and 365 are equipped with a larger transmission and more robust rear axle to handle higher engine torque and lift capacities.

## CAB

The largest cab in the segment provides ample legroom and an unmatched view of the field with over 73 sq. ft. (6.83 sq. m) of window glass. The standard 10" (254 mm) touch-screen monitor supports two external cameras with the optional 12" (305 mm) monitor supporting up to three. Both monitors can be programmed to display key tractor information for quick reference. The monitors and armrest controls seamlessly manage the advanced hydraulic system, auto-shift features and hand throttle. Leather steering wheel and heated and ventilated leather seats can be added to the Deluxe and Deluxe Pro Cab packages below.

**DELUXE CAB** This package includes a heated semi-active cloth seat, instructor seat, dual beacon, 110v inverter and rear sun visor.

**DELUXE PRO CAB** Includes everything in the Deluxe Cab package plus an upgraded 12" (305 mm) monitor and cell phone holder with two USB ports.

## ADVANCED HYDRAULICS

The standard-flow is 55 gpm (208 L/min) and includes four hydraulic valves that can be easily controlled using the display monitor in the cab. The optional high-flow system offers 72 gpm (272 L/min) and adds two more hydraulic valves to the setup, providing a total of six valve sections.

## UNIVERSAL AUTO-STEER

A factory-installed Universal Auto-Steer kit is available for plug and play integration. The system was designed and developed in cooperation with leading auto-guidance suppliers and engineers. The auto-steer kit allows the MFWD to seamlessly integrate with a number of auto-steer providers allowing for flexibility when selecting systems.

## SERVICE & MAINTENANCE

Regular maintenance can extend tractor life, maximize uptime and lower operating costs. The sight gauges for hydraulic oil, coolant, washer fluid and fuel are visible from ground level, helping save time. The engine oil dipstick can be checked without opening the hood. When access to the hood is required, two handles located on the grille make it easy to open and close.

## VERSATILE CBX

Analyze data, reduce downtime and increase efficiency with Versatile CBX. The information includes tractor location, fuel levels, maintenance alerts and more. The user interface creates a clear picture of machine status with an organized visual display. CBX helps take the guesswork out of equipment management and results in increased uptime.

## OPTIONS

The MFWD is well-equipped with standard features. The following options are available to further enhance the tractor:

### Cab

- Deluxe and Deluxe Pro Cab package
- Leather seat and steering wheel
- Training seat
- Satellite radio
- 12" monitor
- Cell phone holder
- Front and rear camera

### Lighting

- Eight LED cab work lights, 18,000 lumens
- 12 LED cab work lights, 27,000 lumens
- Dual beacons

### Hydraulics

- Set of ¾" low pressure couplers
- High flow hydraulic system with six remotes - 72 gpm (272 L/min)

### Front Axles

- Differential lock
- Suspended axle with differential lock (standard on the 335 and 365)

### Drawbar

- Heavy-duty fixed drawbar (1½" pin)
- Heavy-duty fixed drawbar (2" pin) (available on models 275-315)
- Quick hitch (Category III)

### ADDITIONAL OPTIONS

- Variable pitch reversing fan
- Radar
- Universal Auto-steer
- ISOBUS ready harness
- Hydraulic trailer brakes
- Weight packages
- Toolbox

# MFWD SPECIFICATIONS

	275	295	315	335	365
<b>ENGINE</b>					
Engine Model	Cummins QSL9 (Tier IV Final)				
Displacement	9 L (549 cid)				
Horsepower <sup>1</sup>	275 hp (205kW)	295 hp (220 kW)	315 hp (235 kW)	335 hp (250 kW)	365 hp (272 kW)
Power Bulge	8% @ 1,900 rpm	8% @ 1,900 rpm	10% @ 1,900 rpm	10% @ 1,900 rpm	10% @ 1,900 rpm
Peak Horsepower	300 hp (216 kW)	320 hp (239 kW)	340 hp (254 kW)	370 hp (276 kW)	400 hp (298 kW)
PTO hp	220 hp (164 kW)	232 hp (173 kW)	248 hp (185 kW)	268 hp (200 kW)	272 hp (203 kW)
Torque Rise	45% @ 1,500 rpm	34% @ 1,500 rpm	29% @ 1,500 rpm	35% @ 1,500 rpm	31% @ 1,500 rpm
Peak Torque	945 lb-ft (1,282 N•m)	985 lb-ft (1,335 N•m)	995 lb-ft (1,350 N•m)	1,130 lb-ft (1,532 N•m)	1,199 lb-ft (1,626 N•m)
Aspiration	Turbocharged and air-to-air aftercooled				
<b>TRANSMISSION</b>					
Powershift Transmission	16 forward, 9 reverse				
Maximum Speed	25 mph (40 km/h)				
<b>HYDRAULICS</b>					
Type	Closed center load sensing system				
Standard Flow	55 gpm (208 L/min)				
High Flow (optional)	72 gpm (273 L/min)				
Implement Remotes (standard)	4 EHR				
Implement Remotes (optional)	6 EHR				
Maximum System Pressure	2900 psi (200 bar)				
<b>DRAWBAR</b>					
Drawbar (standard)	Category III		Heavy-duty Category III		
Drawbar (optional)	Heavy-duty Category III		-		
<b>3-POINT HITCH &amp; PTO</b>					
3-Point Hitch	Category III / IIIN		Category III / IVN		
PTO (standard)	1,000 rpm		1,000 rpm		
PTO (optional)	540 / 1,000 rpm		-		

	275	295	315	335	365
<b>AXLES</b>					
Front Axle (standard)	Limited slip			Suspended with differential lock	
Front Axle (optional)	Differential lock; Suspended with differential lock			Limited slip; differential lock	
<b>CAB</b>					
Volume	149 cu. ft. (4.22 cu. m)				
Glass	73.5 sq. ft. (6.83 sq. m)				
<b>ELECTRICAL SYSTEM</b>					
Alternator	12V-200 amps				
Batteries	2 12V, 950 CCA				
<b>FUEL SYSTEM</b>					
Fuel Capacity	162 U.S. gal (613 L)				
DEF Capacity	10 U.S. gal (38 L)				
<b>WEIGHTS &amp; DIMENSIONS</b>					
Base Tractor Weight <sup>2</sup>	27,660 lbs (12,546 kg)		28,060 lbs (12,728 kg)		
Recommended Operating GVW	28,600 lbs (12,973 kg)	29,762 lbs (13,500 kg)	31,173 lbs (14,140 kg)	33,950 lbs (15,400 kg)	35,400 lbs (16,057 kg)
Wheelbase	124.6" (3,165 mm)			128.95" (3,275 mm)	

<sup>1</sup>SAE horsepower measured @ 2,100 rpm

<sup>2</sup>Estimated weight based on standard drawbar, no fuel, no operator, no ballast, no additional equipment

NOTE: Specification are correct at time of publishing and are subject to change

# NEMESIS

## PERFORMANCE MADE EASY

The Versatile Nemesis is built with productivity in mind. These mid-range tractors are truly versatile and can be used in a wide variety of applications ranging from mowing, baling hay, material handling or field work. Top-of-the-line features and options include the largest cab in the industry, an advanced hydraulics system and choice of CVT or powershift transmission. The 175, 195, and 210 models provide the flexibility of either a CVT or powershift transmission, while the 235 and 255 models exclusively feature a CVT.

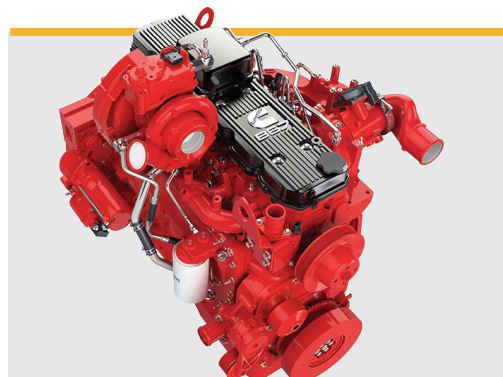


Models	175	195	210	235	255
Rated hp	170 hp	190 hp	210 hp	230 hp	250 hp
Peak hp	195 hp	215 hp	220 hp	260 hp	272 hp
Peak Torque	594 lb-ft	637 lb-ft	668 lb-ft	760 lb-ft	793 lb-ft
Engine	Cummins B6.7 (Stage V)				
Transmission	ZF Powershift, TPT20 (30 forward, 15 reverse) Optional: ZF CVT, TMT20			ZF CVT, TMT25	
Base Weight	18,894 lbs (7,970 kg)			19,425 lbs (8,811 kg)	

### PRODUCT HIGHLIGHTS

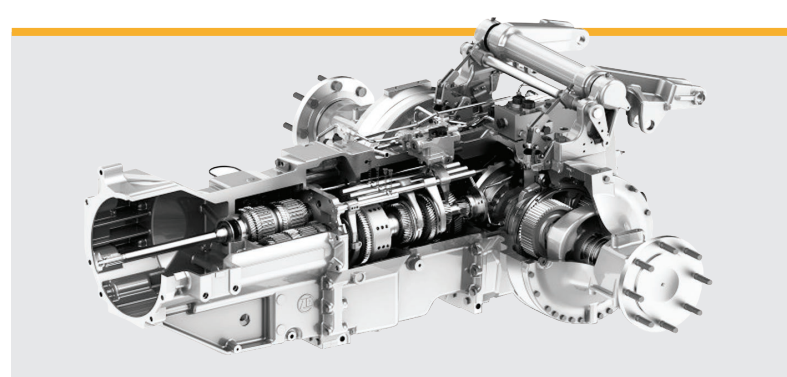
- CVT available on all models
- Powershift transmission available on 175, 195 and 210
- Largest cab in the segment
- Easy-to-use controls
- Rear 3-point hitch and PTO
- Optional front 3-point hitch and PTO
- Optional self-leveling loader with soft ride

# NEMESIS FEATURES



## CUMMINS ENGINE

The Nemesis is powered by a reliable Stage V compliant Cummins B6.7 engine that features the latest in diesel technology. The engine is known for maintaining torque for long periods of time and when working through unexpected tough spots in the field. The award-winning Cummins VGT (Variable Geometry Turbo) is proven to be one of the most reliable turbo designs in the industry.



## ZF TRANSMISSION

The Nemesis comes complete with one of the most reliable and easy-to-operate transmissions in the industry. Operators can choose between a ZF powershift (175-210 only) or CVT, selecting the transmission that best suits their specific needs.

**POWERSHIFT** The ZF powershift transmission balances power and productivity. The auto-shift feature allows for set rpm and ground speeds without constant input from the operator. The Intelligent Range Shift (IRS) quickly reaches optimum working speeds resulting in less operator fatigue by offering full speed matching in all gears (30 forward and 15 reverse). The ZF powershift comes standard on the 175, 195 and 210.

**CVT** Stay in continuous control with a CVT from ZF. The transmission can be easily operated using the command lever or foot throttles. The high-low adaptive speed selections are programmed to meet the needs of various jobs and applications around the farm. The CVT is standard on the 235 and 255, and optional for the 175, 195 and 210.



## VERSATILE CBX

Having better information means making better decisions. The Versatile CBX system can be used to monitor equipment history, mapped location, idle time and fuel levels. The CBX system securely and instantly shares relevant equipment information if an issue occurs. This technology makes it possible to fully understand the situation and quickly find an effective solution, resulting in less downtime.



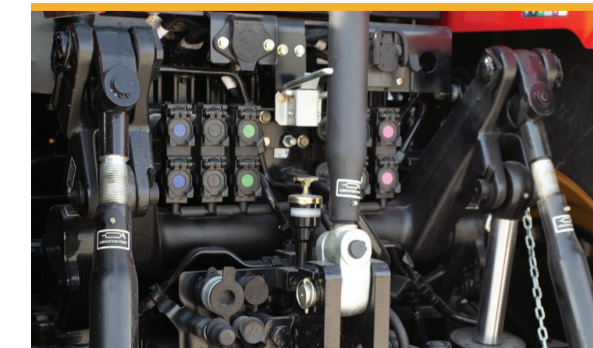
## LARGEST CAB IN THE SEGMENT

The largest cab in the segment offers unmatched visibility with 74.05 sq. ft. (6.87 sq. m) of window glass and ample legroom. Enjoy the convenience of a multi-port power supply located at the rear of the cab, including outlets for monitors, USB style chargers, and a 115-volt AC outlet for laptops or other devices. Add a semi-active cloth seat or heated and ventilated leather seat, leather training seat and leather steering wheel for additional comfort. The optional suspended axle and semi-active suspended cab achieve a smoother, quieter and more enjoyable ride.



## EASY TO UNDERSTAND CONTROLS

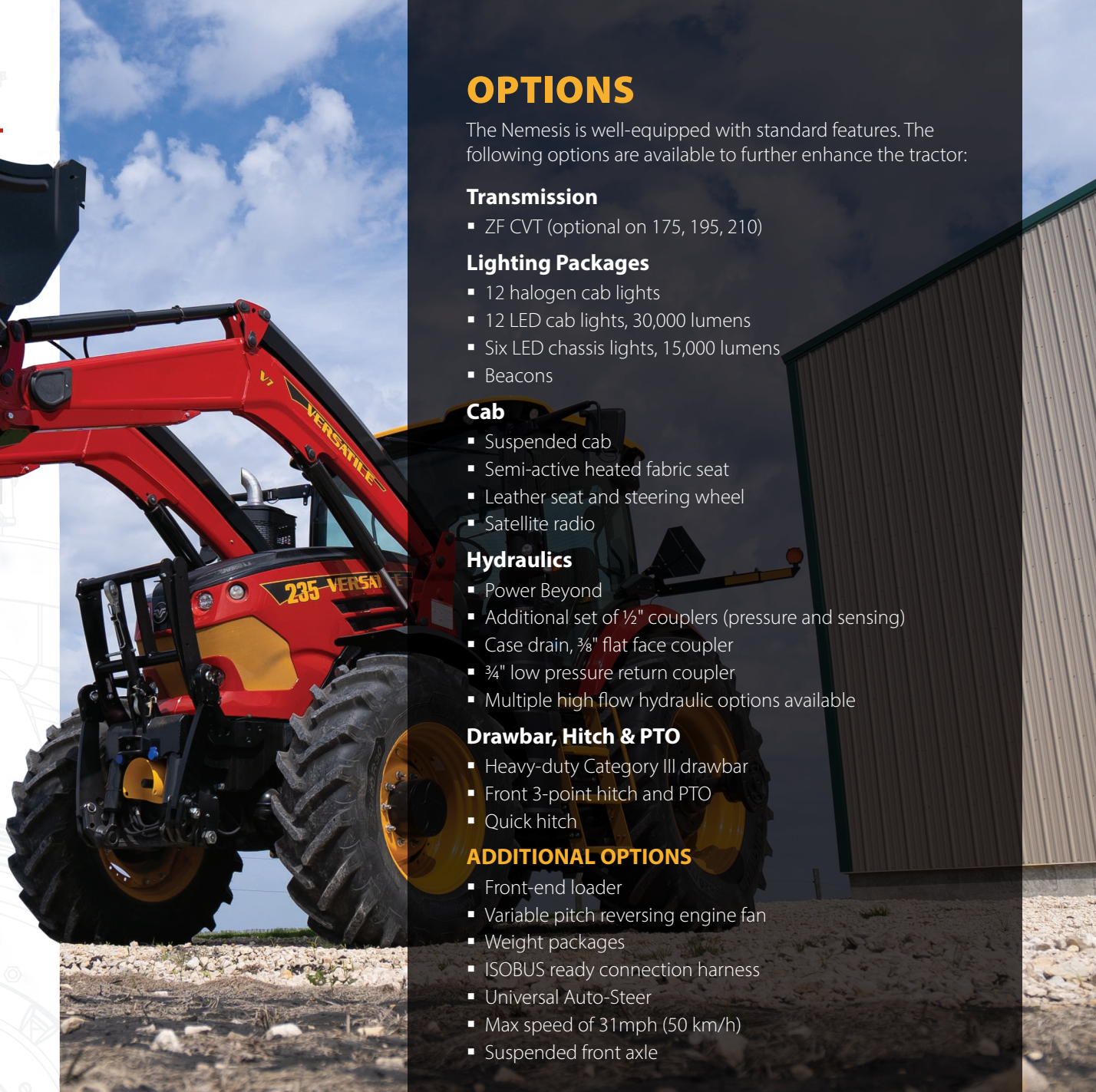
Take charge with a clear user interface and easy-to-use command lever. The lever is built into the armrest and allows the operator to manage key tractor functions with ease. The armrest controls combine functions such as headland management, 3-point hitch control, auto-shift and auto-steer engagement.



## ADVANCED HYDRAULICS

The advanced hydraulics system comes with a 31 gpm (120 L/min) hydraulic pump as standard. The hydraulic configuration can be customized to meet the needs of a wide range of jobs on the farm. Hydraulic performance can be monitored using the cab display and effortlessly controlled using hydraulic levers. Available options include Power Beyond, a 42 gpm (160 L/min) high flow hydraulic system on the 175, 195, and 210 models, and a 48 gpm (180 L/min) high flow system on the 235 and 255 models.

# NEMESIS FEATURES



## 3-POINT HITCH & PTO

Enjoy added flexibility and use a wide range of attachments with the standard rear 3-point hitch and PTO as well as the optional front 3-point hitch with PTO.

**REAR 3-POINT HITCH & PTO (STANDARD)** The PTO system features an ECO mode which reduces engine rpm to increase fuel efficiency. The size of the standard PTO is 540 rpm (1 $\frac{3}{8}$ " 6 spline) and 1,000 rpm (1 $\frac{3}{8}$ " 21 spline) with a larger 1,000 rpm (1 $\frac{3}{4}$ " 20 spline) upgrade available. The rear 3-point hitch is engineered for quick and simple hook up and can be easily operated using the armrest controls. The rear hitch on the 175, 195 and 210 has a lift capacity of 15,543 lbs (7,050 kg). The rear hitch on the 235 and 255 has a lift capacity of 16,314 lbs (7,400 kg) and optional lift capacity of 19,400 lbs (8,800 kg).

**FRONT 3-POINT HITCH & PTO (OPTIONAL)** Use a wide range of attachments with the optional front 3-point hitch with PTO. The size of the front PTO is 1,000 rpm (1 $\frac{3}{8}$ " 21 spline). The front hitch on all models features a lift capacity of 8,818 lbs (4,000 kg).

## SERVICE & MAINTENANCE

Make every second count with the Nemesis. These mid-range tractors come with easy to access service points and a conveniently located dipstick to check engine oil levels. The sight gauges for the hydraulic oil, transaxle, washer fluid and coolant are accessible and visible from ground level. Daily maintenance and routine service can extend tractor life, maximize uptime and lower operating costs.

## FRONT-END LOADER

Get more work done with an optional front-end loader. The loader has an impressive lift capacity of 5,490 lbs (2,490 kg) and features a mechanical self-leveling system with soft ride to maintain balance and control. The loader boasts a maximum lift height and reach of 181" (4.6 m) and a 102" (2,591 mm) bucket. Loader functions are conveniently controlled by an electric joystick and displayed on the cab monitor, helping improve the overall operator experience.

## OPTIONS

The Nemesis is well-equipped with standard features. The following options are available to further enhance the tractor:

### Transmission

- ZF CVT (optional on 175, 195, 210)

### Lighting Packages

- 12 halogen cab lights
- 12 LED cab lights, 30,000 lumens
- Six LED chassis lights, 15,000 lumens
- Beacons

### Cab

- Suspended cab
- Semi-active heated fabric seat
- Leather seat and steering wheel
- Satellite radio

### Hydraulics

- Power Beyond
- Additional set of  $\frac{1}{2}$ " couplers (pressure and sensing)
- Case drain,  $\frac{3}{8}$ " flat face coupler
- $\frac{3}{4}$ " low pressure return coupler
- Multiple high flow hydraulic options available

### Drawbar, Hitch & PTO

- Heavy-duty Category III drawbar
- Front 3-point hitch and PTO
- Quick hitch

### ADDITIONAL OPTIONS

- Front-end loader
- Variable pitch reversing engine fan
- Weight packages
- ISOBUS ready connection harness
- Universal Auto-Steer
- Max speed of 31mph (50 km/h)
- Suspended front axle

# NEMESIS SPECIFICATIONS

	175	195	210	235	255
<b>ENGINE</b>					
Engine Model	Cummins B6.7 (Stage V)				
Displacement	6.7 L (408 cid)				
Horsepower <sup>1</sup>	170 hp (127 kW) @ 2,100 rpm	190 hp (142 kW) @ 2,100 rpm	210 hp (157 kW) @ 2,100 rpm	230 hp (172 kW) @ 2,100 rpm	250 hp (186 kW) @ 2,100 rpm
Peak Horsepower	195 hp (145 kW) @ 1,900 rpm	215 hp (160 kW) @ 1,900 rpm	220 hp (164 kW) @ 1,900 rpm	260 hp (193 kW) @ 1,900 rpm	272 hp (203 kW) @ 1,900 rpm
Torque Rise	34% @ 1,500 rpm	30% @ 1,500 rpm	27% @ 1,500 rpm	29% @ 1,600 rpm	28% @ 1,600 rpm
Peak Torque	594 lb-ft (805 N·m)	637 lb-ft (863 N·m)	668 lb-ft (906 N·m)	760 lb-ft (1,030 N·m)	793 lb-ft (1,075 N·m)
PTO Horsepower (Stationary) <sup>2</sup>	147 hp (110 kW)	150 hp (112 kW)	157 hp (117 kW)	213 hp (159 kW)	224 hp (167 kW)
PTO Horsepower (Field) <sup>2</sup>	147 hp (110 kW)	160 hp (119 kW)	172 hp (128 kW)	213 hp (159 kW)	224 hp (167 kW)
Aspiration	Turbocharged and air-to-air aftercooled				
<b>TRANSMISSION</b>					
Transmission Type (standard)	ZF Powershift (30 forward, 15 reverse)			ZF CVT	
Transmission Type (optional)	ZF CVT			-	
CVT Speed Range (standard)	Turtle mode 0.02-20 km/h - Rabbit mode 0.02-40 km/h				
CVT Speed Range (optional)	Turtle mode 0.02-20 km/h - Rabbit mode 0.02-50 km/h				
Powershift Speed (standard)	25 mph (40 km/h)			-	
Powershift Speed (optional)	31 mph (50 km/h)			-	
<b>HYDRAULICS</b>					
Type	Closed center load sensing system				
Standard Flow	32 gpm (120 L/min)				
High Flow (optional)	42 gpm (160 L/min)			48 gpm (180 L/min)	
Implement Remotes (standard)	3 EHR				
Implement Remotes (optional)	5 EHR			6 EHR	
Maximum System Pressure	2,900 psi (197 bar)				
Power Beyond	Optional				
Trailer Brakes	Optional				
<b>DRAWBAR</b>					
Drawbar	Category III				
Heavy Duty (optional)	Category III				
<b>AXLES</b>					
Front Axle (standard)	Limited slip				
Front Axle (optional)	Differential lock, Suspended differential lock				

	175	195	210	235	255
<b>3-POINT HITCH &amp; PTO</b>					
Rear 3-Point Hitch <sup>3</sup>	Category III / IIIN				
Rear 3-Point Hitch Lift Capacity <sup>3</sup>	15,543 lbs (7,040 kg)			16,314 lbs (7,400 kg)	
Front 3-Point Hitch (optional)	Category III				
Front 3-Point Hitch Lift Capacity	8,818 lbs (4,000 kg)				
Rear PTO (standard)	540, 540e / 1,000, 1,000e; 1 3/8" shaft			540e / 1,000, 1,000e; 1 3/8" shaft	
Rear PTO (optional)	1,000, 1,000e; 1 3/4" shaft				
Front PTO (optional) with Front 3-Point Hitch	1,000; 1 3/8" shaft, CW rotation viewed from the front				
<b>CAB</b>					
Volume	148 cu. ft. (4.19 cu. m)				
Glass	74.05 sq. ft. (6.87 sq. m)				
Semi-Active Suspended Cab	Optional				
Panoramic Roof	Standard				
<b>LIGHTING</b>					
Cab (standard)	8 Halogen				
Cab (optional)	12 Halogen 360 degree lighting				
Cab LED (optional)	12 LED 360 degree lighting				
Chassis (optional)	6 LED				
<b>ELECTRICAL SYSTEM</b>					
Alternator	12V-200 amps				
Batteries	2 12V, 950 CCA				
<b>FUEL SYSTEM</b>					
Fuel Capacity	99 U.S. gal (375 L)				
DEF Capacity	9 U.S. gal (35 L)				
<b>LOADER - OPTIONAL</b>					
Mechanical Self-Leveling System	Standard				
Soft Ride Kit	Standard				
Maximum Lift Capacity	5,490 lbs (2,490 kg)				
Maximum Lift Height	181" (4.6 m)				
<b>WEIGHTS &amp; DIMENSIONS</b>					
Base Tractor Weight <sup>4</sup>	18,894 lbs (7,970 kg)			19,425 lbs (8,811 kg)	
Wheelbase	114" (2,896 mm)			117" (2,972 mm)	

<sup>1</sup>SAE horsepower

<sup>2</sup>Manufacturers estimates

<sup>3</sup>SAE capacity

<sup>4</sup>Estimated weight based on standard drawbar, no fuel, no operator, no ballast, no additional equipment

NOTE: Specification are correct at time of publishing and are subject to change

# FURY

## HIGH SPEED DISCS

### DOMINATE YOUR RESIDUE

Versatile high speed discs are built to boost productivity without sacrificing seedbed quality. Four new models debuting in 2026 expanding the Fury lineup to include working widths from 15' to 40' (4.5 m - 12.3 m). The Fury HS uses an aggressive 20° pitch angle with a wide range of working speeds to provide a superior field finish. The disc arm and 10° pitch angle on the Fury R is better suited to rocky conditions. The high speed discs have some of the highest weight-per-foot ratios on the market, ensuring they can handle hard or dense soils. An assortment of blade sizes, and rear finishing attachments are available to fine-tune the Fury HS and Fury R to specific field conditions.



## PRODUCT HIGHLIGHTS

- **New for 2026**, the Fury will be available in 15', 18', 21', and 24' widths, complementing the existing 25', 30', 35', and 40' models
- Navigate easily between fields with industry leading transport clearance: 9'10" (3.0 m) wide for 150 - 240 models, 12' (3.65 m) wide for 250 - 400 models, and a transport height of 13'5" (4.1 m)
- Top weight-per-foot ratios on the market of 830-1,031 lbs/ft (1,243-1,540 kg/m)

### FURY HS

- Two blade size options: 22" or 24" (559 or 610 mm)
- Aggressive 20° disc angle provides ideal field finish
- Wide range of working speeds from 5-12 mph (7.5-20 km/h)
- Choice of rear finishing attachments:
  - Heavy-duty round bar rolling basket
  - Spring foot packer
  - Semi-pneumatic rubber packer with heavy-duty scraper

### FURY R

- Two blade size options: 20" or 22" (508 or 559 mm)
- 10° disc angle; better suited for rocky conditions
- Top operating speed of 14 mph (22.5 km/h)
- Choice of rear finishing attachments:
  - Heavy-duty round bar rolling basket
  - Semi-pneumatic rubber packer with heavy-duty scraper

# FURY FEATURES



## FRAME DESIGN

The rugged and robust frame is one of the heaviest and most durable in the high speed tillage segment at 830-1,031 lbs/ft (1,235-1,534 kg/m). The heavy-duty build ensures even disc depth in the most demanding soil conditions.

## TIRES

Large radial tires provide a wider footprint for maximum flotation and minimal compaction in all field conditions. All working widths feature high-quality Superflot tires on the center section.

## DISC ARM SUSPENSION

Four rubber torsion elements protect each blade. This design helps absorb impact and allows the arm to move up or down independently over obstacles in the field. The compression of the rubber bushings upon impact helps extend the life of the implement by protecting the blade, bearing and frame from heavy shock loads.

## BLADES

Versatile high speed discs offer the latest in boron steel technology. The shallow concave edges help boost longevity by allowing the blades to flex rather than crack or break upon impact. The 22" (559 mm) smooth front and rear blades are standard on the Fury HS. The 20" (508 mm) smooth front and rear blades are standard on the Fury R. The three blade configurations available are smooth front and rear; notched front and smooth rear; and notched front and rear.

## REAR ATTACHMENTS

Available rear attachments include the heavy-duty cage rollers, corrugated rubber rollers or spring rollers (Fury HS only). Heavy-duty cage rollers come standard and are the perfect choice for primary tillage applications; corrugated rubber rollers offer outstanding performance in seedbed preparation; and spring rollers are best suited to handle sticky soils while leaving some surface roughness to limit erosion.

## FIELD SPEEDS

The aggressive disc angle and wide range of working speeds separates the Fury from other high speed tillage options on the market. Performance remains consistent at speeds of 5 to 12 mph (7.5-20 km/h) on the Fury HS and 8 to 14 mph (12.9-22.5 km/h) on the Fury R. The higher working speeds ensure the even distribution of residue and eliminate challenges such as uneven emergence, hair pinning and erosion.

## TRANSPORT

The Fury's transport dimensions are among the best in the industry. Easily navigate between fields and public roadways with clearances of 9'10" (2.99 m) wide and 13'5" (4.1 m) high for Fury 150 - 240 and 12' (3.65 m) wide and 13'5" (4.1 m) high for Fury 250 - 400.

## DISC ARM OPTIONS

The Fury HS has an aggressive 20° disc pitch angle to provide a superior field finish. The increased mixing of residue and soil movement allows for improved performance at a wide range of working speeds. The Fury R has a 10° pitch angle that is better suited to rocky conditions and higher speeds.

## OPTIONS

The Fury comes factory-ready for the most extreme field residue conditions. The high speed discs are configurable with multiple options to suit any operation.

### Working Widths

- New for 2026, 15', 18', 21' and 24' (4.5 m, 5.5 m, 6.5 m, and 7.5 m)
- Existing models 25', 30', 35' and 40' (7.7 m, 9.3 m, 10.8 m, and 12.3 m)

### Disc Blades

- Fury HS - 22" or 24" (559 or 610 mm)
- Fury R - 20" or 22" (508 or 559 mm)
- Choice of notched or plain edge

### Finishing Tools

- Heavy-duty round bar rolling basket
- Semi-pneumatic rubber packer with heavy-duty scraper
- Spring foot packer (Fury HS only)

### ADDITIONAL OPTIONS

- Cab controlled hydraulic scraper disengage

# FURY SPECIFICATIONS

	FURY HS							
	HS150	HS180	HS210	HS240	HS250	HS300	HS350	HS400
<b>DIMENSIONS</b>								
<b>Width, Minimum Working</b>	14'7" (4.5 m)	17'11" (5.5 m)	21'3" (6.5 m)	24'7" (7.5 m)	25'5" (7.7 m)	30'5" (9.3 m)	35'5" (10.8 m)	40'5" (12.3 m)
<b>Width, Transport</b>	9'10" (3.0 m)				11'10" (3.6 m)			
<b>Height, Transport</b>	13'5" (4.1 m)							
<b>Weight (average over options)</b>	1,224 lbs/ft (1800 kg/m)	1,161 lbs/ft (1,715 kg/m)	1,061 lbs/ft (1,574 kg/m)	1,017 lbs/ft (1,512 kg/m)	1,031 lbs/ft (1,540 kg/m)	947 lbs/ft (1,410 kg/m)	895 lbs/ft (1,330 kg/m)	854 lbs/ft (1,270kg/m)
<b>Horsepower Required (drawbar)</b>	10-17 hp/ft (24-42 kW/m)							
<b>Working Depth</b>	2.5-5" (64-127 mm)							
<b>Working Speed</b>	5-12 mph (7.5-20 km/h)							
<b>STRUCTURE</b>								
<b>Frame, Main Frame</b>	8" x 4" x 0.5" (203 x 102 x 12.7 mm)							
<b>Frame, Cross Member</b>	6" x 4" x 0.5" (152 x 102 x 12.7 mm)							
<b>Disc Bearings</b>	Hub 40 bearing, double roller maintenance-free bearings, 6 mounting bolts							
<b>Blade Angle</b>	Front blades at 17° with a 20° pitch; rear blades at 15° with a 20° pitch							
<b>BLADES</b>								
<b>Blades Size (standard)</b>	22" x ¼" (560 x 6.5 mm)							
<b>Blades Size (optional)</b>	24" x ⅝" (609 x 8 mm)							
<b>Blade Style</b>	All blade sizes available in plain and notched							
<b>Blade Spacing</b>	10" (254 mm)							
<b>FEATURES</b>								
<b>Tires, Wing Frame</b>	380/55R16.5 FS24				600/50R22.5 IMP Superflot TL			
<b>Depth Control</b>	Depth stop segments at hitch cylinders and right hand wing rear cylinder				Depth stop segments at hitch cylinders and left hand wing rear cylinder			
<b>Tires, Hitch Frame</b>	600/50R22.5 IMP Superflot TL						710/40R22.5 IMP Superflot TL	
<b>FINISHING TOOLS</b>								
<b>Cage Rollers with Solid Bars</b>	24" (609 mm) diameter with 10 1.5" (38 mm) diameter spiral round bars, 6 sections							
<b>Spring Rollers</b>	24" (609 mm) diameter with 4 curved springs mounted in a spiral configuration, 6 sections							
<b>Rubber Rollers</b>	21.3" (541 mm) diameter with rubber semi-pneumatic tire, 3 sections							

NOTE: Specification are correct at time of publishing and are subject to change

	FURY R							
	R150	R180	R210	R240	R250	R300	R350	R400
<b>DIMENSIONS</b>								
<b>Width, Minimum Working</b>	14'7" (4.5 m)	17'11" (5.5 m)	21'3" (6.5 m)	24'7" (7.5 m)	25'5" (7.7 m)	30'5" (9.3 m)	35'5" (10.8 m)	40'5" (12.3 m)
<b>Width, Transport</b>	9'10" (3.0 m)				11'10" (3.6 m)			
<b>Height, Transport</b>	13'5" (4.1 m)							
<b>Weight (average over options)</b>	1,137 lbs/ft (1671 kg/m)	1,074 lbs/ft (1,587 kg/m)	975 lbs/ft (1,446 kg/m)	932 lbs/ft (1,387 kg/m)	1,011 lbs/ft (1,507 kg/m)	927 lbs/ft (1,382 kg/m)	875 lbs/ft (1,304 kg/m)	834 lbs/ft (1,243 kg/m)
<b>Horsepower Required (drawbar)</b>	8.5-14 hp/ft (20-34 kW/m)							
<b>Working Depth</b>	2.5-5" (64-127 mm)							
<b>Working Speed</b>	8-14 mph (12.5-22.5 km/h)							
<b>STRUCTURE</b>								
<b>Frame, Main Frame</b>	8" x 4" x 0.5" (203 x 102 x 12.7 mm)							
<b>Frame, Cross Member</b>	6" x 4" x 0.5" (152 x 102 x 12.7 mm)							
<b>Disc Bearings</b>	Hub 30 bearing, double roller maintenance-free bearings, 4 mounting bolts							
<b>Blade Angle</b>	Front blades at 17° with a 10° pitch; rear blades at 15° with a 10° pitch							
<b>BLADES</b>								
<b>Blades Size (standard)</b>	20" x ¼" (508 x 6.5 mm)							
<b>Blades Size (optional)</b>	22" x ¼" (560 x 6.5 mm)							
<b>Blade Style</b>	All blade sizes available in plain and notched							
<b>Blade Spacing</b>	10" (254 mm)							
<b>FEATURES</b>								
<b>Tires, Wing Frame</b>	380/55R16.5 FS24				600/50R22.5 IMP Superflot TL			
<b>Depth Control</b>	Depth stop segments at hitch cylinders and right hand wing rear cylinder				Depth stop segments at hitch cylinders and left hand wing rear cylinder			
<b>Tires, Hitch Frame</b>	600/50R22.5 IMP Superflot TL						710/40R22.5 IMP Superflot TL	
<b>FINISHING TOOLS</b>								
<b>Cage Rollers with Solid Bars</b>	24" (609 mm) diameter with 10 1.5" (38 mm) diameter spiral round bars, 6 sections							
<b>Spring Rollers</b>	24" (609 mm) diameter with 4 curved springs mounted in a spiral configuration, 6 sections							
<b>Rubber Rollers</b>	21.3" (541 mm) diameter with rubber semi-pneumatic tire, 3 sections							

NOTE: Specification are correct at time of publishing and are subject to change



# VIKING

## VERTICAL TILLAGE

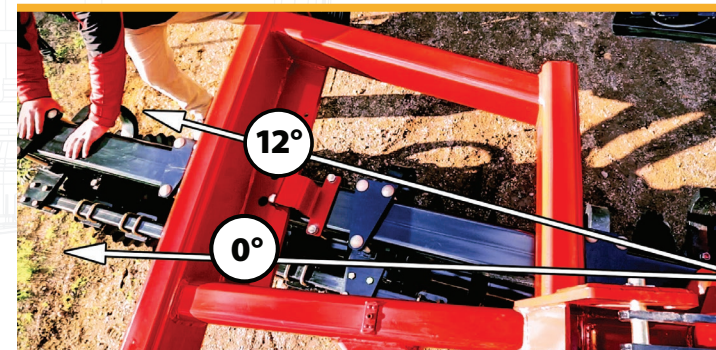
### FIRST-CLASS FIELD FINISH

The Versatile Viking vertical tillage tool is built for fall residue management and spring seedbed preparation. The Viking will cut, chop and size difficult residue in the most demanding ground conditions. The heavy-duty 800 lbs/ft (1,191 kg/m) frame helps maintain an even and consistent cut at shallow disc angles or in harsh field conditions. Customize the implement to suit any field with a wide assortment of blade spacing, blade sizes, attachments and gang angle adjustments.

#### PRODUCT HIGHLIGHTS

- Multi-season tillage tool
- Adjustable gang angle from 0-12°, in 4° increments
- Heavy-duty 800 lbs/ft (1,191 kg/m) frame
- Blade spacings available in 8" or 9" (203 or 229 mm) configurations
- Three rear attachments for a variety of finishes
  - 4" x 4" (102 mm x 102 mm) mount bar
  - 12" (305 mm) flat bar rolling baskets
  - Medium-duty tine harrows

# VIKING FEATURES



## HEAVY-DUTY DESIGN

A true heavy-weight, the 800 lbs/ft (1,191 kg/m) frame helps keep the machine cutting evenly and consistently through heavy trash and tough conditions without the need for hydraulic down pressure.

## BLADES

SoilRazor™ vertical tillage blades are designed for chopping trash at high speeds with minimal soil disturbance. The blades are built with boron steel to last longer and maintain sharp edges throughout the entire wear zone. Choose between the 8" or 9" (203 or 229 mm) blade spacing to best match depth and field residue.

## REAR ATTACHMENTS

There are three rear finishing attachments available. A basic 4" x 4" (102 x 102 mm) mount bar allows for the installation of almost any finishing attachment. The 12" (305 mm) diameter flat bar rolling baskets help mix residue into the soil and leave a firm and even finish. The mounted tine harrows smooth out the soil and spread heavy amounts of residue behind the machine.

## ADJUSTABLE GANG ANGLE

The Versatile Viking is designed for multi-season tillage thanks to an adjustable gang angle that can work through spring seedbed preparation and fall residue management with ease. The gang angle can be manually or hydraulically adjusted from 0-12° in 4° increments.

**SPRING** It is recommended to use a shallow disc angle of 0-4° to lightly till the soil and prepare a seedbed. The opened soil surface allows excess moisture to escape and aids in warming the seedbed to promote rapid emergence.

**FALL** Use a more aggressive disc angle of 8-12° for maximum chopping and burying of residue in the fall. The Viking can be used ahead of, or in place of, light primary tillage and clean up field edges, low spots and ruts.

## HITCH

The hitch and unique toggle-beam leveling system provide industry-leading ground following capabilities of 12° up and 10° down in all field conditions. The hitch design allows operators to change and adjust the angle of the hitch during operation for fine-tuned performance.

## OPTIONS

Versatile vertical tillage is designed to be customized. From upgrades to deal with unique trash and soil challenges, to performance-enhancing kits, the Viking can be configured to work in various conditions with these options.

### Working Widths

- 29', 32', 34.5' or 37.5' (8.8, 9.6, 10.4 or 11.3 m)

### Disc Gang Options

- 8" or 9" (203 or 229 mm) disc spacing
- 20", 22" or 24" (508, 559 or 610 mm) SoilRazor blades
- Bearing wear plates
- Heavy-duty scrapers

### Rear Attachments

- 4" x 4" (102 mm x 102 mm) mount bar
- 12" (305 mm) diameter flat bar rolling baskets
- Mounted tine harrows

### Hydraulic Adjustments

- Single-point depth control
- Gang angle adjustments
- Hitch angle adjustments

# VIKING SPECIFICATIONS

	VT290		VT320		VT345		VT375	
	8" SPACING	9" SPACING	8" SPACING	9" SPACING	8" SPACING	9" SPACING	8" SPACING	9" SPACING
<b>DIMENSIONS</b>								
<b>Width, Working<sup>1</sup></b>	28'10" (8.8m)	28'10" (8.8m)	31'7" (9.6m)	32' (9.8m)	34'2" (10.4m)	35'2" (10.7m)	36'11" (11.3m)	38'4" (11.7m)
<b>Width, Transport</b>	17'3" (5.3m)	17'3" (5.3m)	17'3" (5.3m)	17'3" (5.3m)	17'7" (5.4m)	17'10" (5.4m)	17'7" (5.4m)	17'10" (5.4m)
<b>Height, Transport</b>	13'8" (4.2m)	13'8" (4.2m)	14'6" (4.4m)	14'6" (4.4m)	14'8" (4.5m)	15' (4.6m)	16' (4.9m)	16'3" (5.0m)
<b>Weight Class</b>	800 lbs/ft class (1,190 kg/m)							
<b>Horsepower Required (drawbar)</b>	8-12 hp/ft (20-29 kW/m)							
<b>Working Depth</b>	0-5" (0-127 mm)							
<b>Working Speed</b>	7-10 mph (11-16 km/h)							
<b>STRUCTURE</b>								
<b>Frame, Main Frame</b>	8" x 4" x 0.5" (203 x 102 x 12.7 mm)							
<b>Frame, Cross Member</b>	6" x 4" x 0.5" (152 x 102 x 12.7 mm)							
<b>Bearings</b>	T2-215 series							
<b>Gang Angle, Adjustable</b>	0°, 4°, 8°, 12°							
<b>Gang Shaft</b>	1 <sup>5</sup> / <sub>16</sub> " (49 mm) high carbon steel							
<b>Gang Shaft, Factory Torqued</b>	3,200 lb-ft (4,339 N-m)							
<b>BLADES</b>								
<b>Blades (standard)</b>	22" x 1/4" (559 x 6.5 mm) SoilRazor™							
<b>Blades (optional)</b>	24" x 1/4" (610 x 6.5 mm) SoilRazor™							
<b>FEATURES</b>								
<b>Tires, Main Frame</b>	FS24 380/55R16.5 radial tires (290 and 320 models) FS24 440/55R18 radial tires (345 and 375 models)							
<b>Tires, Wing Frame</b>	12.5L x 15 implement tires							
<b>Depth Control</b>	3-cylinder series system comes with depth stop segments Optional single point hydraulic depth control							
<b>FINISHING TOOLS</b>								
<b>Rolling Baskets</b>	12" (305 mm) diameter with 8 spiral flat bars							
<b>Tine Harrows</b>	3 bar mounted, 3/8" x 18" tines							
<b>Tool Mounting Bar</b>	4" x 4" (102 x 102mm) bar for any finishing tools							

<sup>1</sup>Working width measured up to the furrow filler blade at 8° of gang angle

NOTE: Specifications are correct at time of publishing and are subject to change



# LEGACY

## TANDEM & OFFSET DISCS

### GROUND BREAKING EXPERTISE

Versatile's Legacy tillage has been proven over the past five decades and hundreds of thousands of acres. The Legacy tillage line offers a wide assortment of configurations for tandem and offset discs ideal for land conversion and repair. These tillage tools are available in multiple sizes, working widths, weight classes and blade spacings to best meet specific job requirements.

#### PRODUCT HIGHLIGHTS

- Wide variety of models and options
- Tightest torque and highest load-rated gangs in the industry
- Heavy-duty frame design
- High-quality blade technology



#### TANDEM DISC

Versatile tandem discs are built to handle harsh conditions and even harsher crop residue. The robust frame (350-700 lbs/ft; 521-1,042 kg/m) and extreme-duty gang bearing options assure longevity and reliability in the field. The wide selection of weight classes, working widths from 11'6" to 40' (3.5-12.2 m) and blade spacings ranging from 8" to 12" (203-305 mm) means the right tandem disc is available for light, medium and heavy primary tillage needs.

#### OFFSET DISC

Versatile offset discs are all-purpose machines built with the strength needed to perform. An assortment of weight classes, working widths ranging from 10' to 20' (3.0-6.1 m), and 10 1/2" or 12" (266 or 305 mm) blade spacings are available. This wide selection of features and options means that the right machine is available to suit any operational needs.

# LEGACY FEATURES



## GANGS

Versatile disc gangs are designed for the most demanding working conditions such as land reclamation and feature the tightest torque in the industry at 3,200 lbs/ft (4,762 kg/m). The optional heavy-duty T2-215 bearings offer the highest load rating in the industry (available on select models, see specs for more details).

## BLADE TECHNOLOGY

Quality tillage tools start with quality blades. This is why all Legacy tillage discs feature the latest micro-alloy boron steel technology. The disc blades combine the critical performance characteristics of superior resistance with long-wearing abrasion-resistant hardness.

## STEEL FABRICATED SPOOLS

Legacy tillage discs feature fabricated steel half and full spools. The steel spools can withstand far greater shock loads from rocks or stumps than cast-iron spools. This design improves equipment longevity and effectively eliminates spool breakage.

## OPTIONS

Legacy tillage tools are designed and equipped for tough conditions straight from the factory. Options are available to further configure the machine depending on the model and application.

### Working Widths

- Tandem disc - 11.5-40.5' (3.5-12.3 m)
- Offset disc - 10-20' (3.0-6.1 m)

### Disc Gang Options

- 211, 410WSS and heavy-duty T2-215 bearings available, depending on model
- Interlocking spool upgrade available with T2-215 bearings
- Bearing trash guards
- Bearing wear plates

### Blades & Scrapers

- Tandem disc - 22", 24", 26" and 28" (558, 609, 660 and 711 mm) diameter blades, choice of notched or plain edge
- Offset disc - 26", 28" and 30" (660, 711 and 762 mm) diameter blades, choice of notched or plain edge
- Heavy-duty flat bar or wide pan floating scrapers

### Blade Spacings

- Tandem disc - 8", 9", 10.5" or 12" (203, 229, 267 or 305 mm)
- Offset disc - 10.5" or 12" (267 or 305 mm)

### Hydraulic System Upgrades

- Single point depth control
- Hydraulic hitch angle adjustment

### Finishing Tools

- Heavy-duty tine harrows (TD600N only)
- Round bar rolling baskets (TD600N only)

# TANDEM DISC SPECIFICATIONS

	TD400		TD500N	TD500	
	8" SPACING	9" SPACING	9" SPACING	8" SPACING	9" SPACING
<b>DIMENSIONS</b>					
<b>Width, Working<sup>1</sup></b>	11'6", 14'6", 16', 18'6", 20' (3.5-6.0 m)	11'6", 14'6", 16'6", 18', 19'6" (3.5-5.9 m)	18', 23', 26' 6" (5.5-8.1 m)	28', 32', 35'6", 38', 40'6" (8.5-12.3 m)	29'6", 32'6", 35'6", 38'6", 40' (9.0-12.2 m)
<b>Width, Transport</b>	13'-21' 6" (4-6.6 m)		12' (3.7 m)	18' (5.5 m)	
<b>Height, Transport<sup>2</sup></b>	-		10'-13'7" (3.0-4.1 m)	12'4"-18'1" (3.76-5.5 m)	
<b>Weight<sup>1</sup></b>	350 lbs/ft (521 kg/m)		450 lbs/ft (671 kg/m)		
<b>Horsepower Required (drawbar)<sup>1,3</sup></b>	4.5-6 hp/ft (11-15 kW/m)	5.0-7.0 hp/ft (12-17 kW/m)	5-7 hp/ft (12-17 kW/m)	4.5-6 hp/ft (11-15 kW/m)	5-7 hp/ft (12-17 kW/m)
<b>STRUCTURE</b>					
<b>Frame</b>	Welded, 4" x 4" (102 x 102 mm) tubular steel frame				
<b>Gang Beam Size</b>	-				
<b>Gang Bearings (standard)</b>	211 WSS series		410 WSS series comes with triple lip seal		
<b>Gang Bearings (optional)</b>	-				
<b>Gang Angle</b>	20°, 21°, 22°, 23° front and rear		20° front; 17° rear		
<b>Gang Shaft</b>	1 <sup>5</sup> / <sub>16</sub> " (49 mm) high carbon steel, torqued to 3,200 lb-ft (4,340 Nm)				
<b>BLADES</b>					
<b>Blade Styles Available</b>	Most blade sizes available in Plain (P) and Notched (N) options				
<b>Blade Size (standard)</b>	22" x 1/4" (560 x 6.5 mm) (P)				
<b>Blade Size (optional)</b>	22" x 1/2" (560 x 7 mm) (N)	22" x 3/2" (560 x 7 mm) (N) 24" x 1/2" (610 x 7 mm) (P) 24" x 3/8" (610 x 8 mm) (P, N)	22" x 1/2" (560 x 7 mm) (N) 24" x 1/2" (610 x 7 mm) (P) 24" x 3/8" (610 x 8 mm) (P, N)	22" x 1/2" (560 x 7 mm) (N)	22" x 1/2" (560 x 7 mm) (N) 24" x 1/2" (610 x 7 mm) (P) 24" x 3/8" (610 x 8 mm) (P, N)
<b>FEATURES</b>					
<b>Tires, Main Frame</b>	2 11L x 15 FI (11.5'-14.5' sizes) 4 11L x 15 FI (16'+ sizes)		4 11L x 15 FI	4 11L x 15 FI (28'-32' units) 4 12.5L x 15 FI LR (F) (35'+ units)	
<b>Tires, Wing Frame</b>	-		2 11L x 15 FI	4 11L x 15 FI	
<b>Depth Control</b>	Single cylinder system comes with depth stop segments		3-cylinder series system comes with depth stop segments		
<b>Hitch</b>	Adjustable		Auto-leveling, full floating hitch; Optional hydraulic hitch leveling		

	TD600	TD600N		TD700	
	10.5" SPACING	9" SPACING	10.5" SPACING	10.5" SPACING	12" SPACING
<b>DIMENSIONS</b>					
<b>Width, Working<sup>1</sup></b>	25', 29', 32', 35' 6" (7.6-10.8 m)	15'11", 18'10", 21'10", 23'3" (4.9-7.1 m)	16'4", 18'10", 21'6", 23'3" (5.0-7.1 m)	25', 26'6", 29', 32', 35'6", 38'6" (7.6-11.7 m)	24', 26', 28'6", 30'6", 32'6", 36'6", 38'6" (7.3-11.7 m)
<b>Width, Transport</b>	17'6" (4.4 m)	9'6" (2.9 m)		17'6" (4.4 m)	
<b>Height, Transport<sup>2</sup></b>	11'6"-15'11" (3.5-4.9 m)	12'1"-15'8" (3.7-4.7 m)		10'9"-17'5" (3.3-5.3 m)	
<b>Weight<sup>1</sup></b>	600 lbs/ft (892 kg/m)	650 lbs/ft (970 kg/m)	550 lbs/ft (820 kg/m)	700 lbs/ft (1,042 kg/m)	
<b>Horsepower Required (drawbar)<sup>1,3</sup></b>	6-8 hp/ft (15-20 kW/m)			7-9 hp/ft (17-22 kW/m)	
<b>STRUCTURE</b>					
<b>Frame</b>	Welded, 6" x 4" (152 x 102 mm) tubular steel frame	Welded, 4" x 4" (102 x 102 mm) and 6" x 4" (152 x 102 mm) tubular steel frame		Welded, 8" x 4" (203 x 102 mm) tubular steel frame	
<b>Gang Beam Size</b>	-		6" x 4" x 3/8" (152 x 102 x 9 mm)		
<b>Gang Bearings (standard)</b>	410 WSS series comes with triple lip seal				
<b>Gang Bearings (optional)</b>	T2-215 series trunnion mounted	-	T2-215 series trunnion mounted	-	
<b>Gang Angle</b>	20° front; 17° rear	23°, 20°, 17° front; 20°, 17°, 14° rear		21° front; 19° rear	
<b>Gang Shaft</b>	1 <sup>5</sup> / <sub>16</sub> " (49 mm) high carbon steel, torqued to 3,200 lb-ft (4,340 Nm)				
<b>BLADES</b>					
<b>Blade Styles Available</b>	All blade sizes available in Plain (P) and Notched (N) options				
<b>Blade Size (standard)</b>	26" x 5/16" (660 x 8 mm) (P)	24" x 5/16" (610 x 8 mm) (P)	26" x 5/16" (660 x 8 mm)	26" x 5/16" (660 x 8 mm) (P)	28" x 3/8" (711 x 9 mm) (P)
<b>Blade Size (optional)</b>	26" x 5/16" (660 x 8 mm) (N) 26" x 3/8" (660 x 9 mm) (P, N)	24" x 5/16" (610 x 8 mm) (N) 26" x 5/16" (660 x 8 mm) (P, N)	26" x 5/16" (660 x 8 mm) (N)	26" x 5/16" (660 x 8 mm) (N) 26" x 3/8" (660 x 9 mm) (P, N) 28" x 3/8" (711 x 9 mm) (P, N)	28" x 3/8" (711 x 9 mm) (N)
<b>FEATURES</b>					
<b>Tires, Main Frame</b>	4 12.5L x 15 FI 4 FS24-380/55R16.5 - optional	2 FS24-380/55R16.5 (16' and 19' units) 2 FS24-440/55R18 (21' and 23' units)		4 FS24 380/55R16.5	
<b>Tires, Wing Frame</b>	4 12.5L x 15 FI 4 FS24-380/55R16.5 - optional	-		4 12.5L x 15 FI 4 FS24-380/55R16.5 - optional	
<b>Depth Control</b>	3-cylinder series system comes with depth stop segments Optional hydraulic single point depth control	Single cylinder system comes with depth stop segments		3-cylinder series system comes with depth stop segments Optional hydraulic single point depth control	
<b>Hitch</b>	Auto-leveling, full floating hitch; Optional hydraulic hitch leveling				

<sup>1</sup>With 26" blades

<sup>2</sup>Always confirm heights with all accessories attached

<sup>3</sup>Depends on working depth, soil type, field speed, etc.

NOTE: Specification are correct at time of publishing and are subject to change

# OFFSET DISC SPECIFICATIONS

	SD550		SD650	
	10.5" SPACING		10.5" SPACING	12" SPACING
<b>DIMENSIONS</b>				
<b>Width, Working</b>	10', 12', 14', 15', 16', 18', 20' (3.0-6.1 m)		10', 12', 14', 15', 16', 18', 20' (3.0-6.1 m)	
<b>Width, Transport</b>	2'6" (762 mm) wider than working width			
<b>Weight<sup>1</sup></b>	565+ lbs/ft (841 kg/m)		590 lbs/ft (878 kg/m)	
<b>Weight, Blade<sup>1</sup></b>	266 lbs/disc (121 kg)		260 lbs/disc (118 kg)	300 lbs/disc (136 kg)
<b>Horsepower Required (drawbar)<sup>2</sup></b>	7-9 hp/ft (17-22 kW/m)		8-10 hp/ft (19.5-25 kW/m)	
<b>STRUCTURE</b>				
<b>Frame</b>	6" x 4" x 3/8" (152 x 102 x 9 mm)		8" x 4" x 3/8" (203 x 102 x 9 mm)	
<b>Hitch</b>	96" (2.4 m) long, automatic self-leveling, optional hydraulic hitch leveling			
<b>Gang Beam Size</b>	6" x 4" x 3/8" (152 x 102 x 9 mm)			
<b>Gang Bearings (standard)</b>	410 WSS series		T2-215 series	
<b>Gang Bearings (optional)</b>	T2-215 series		-	
<b>Gang Angle</b>	25°, 22°, 19° front and rear			
<b>Gang Shaft</b>	1 1/16" (49 mm)			
<b>Gang Hanger</b>	Stone-flex, 1 1/4" x 2 1/2" (32 x 64 mm)			
<b>Spool Size (steel fabricated)</b>	6" (152 mm) diameter Optional interlocking half spools		10.5" option, 7" (178 mm) diameter; Optional interlocking half spools 12" option, 7" (178 mm) diameter; Standard interlocking half spools	
<b>BLADES</b>				
<b>Blade Styles Available</b>	All blade sizes available in Plain (P) and Notched (N) options			
<b>Blade Size (standard)</b>	24" x 5/16" (610 x 8 mm) (N)		26" x 5/16" (660 x 8 mm) (N)	28" x 3/8" (711 x 9 mm) (N)
<b>Blade Size (optional)</b>	26" x 5/16" (660 x 8 mm) (N,P) 26" x 3/8" (660 x 9 mm) (N,P)		26" x 5/16" (660 x 8 mm) (P) 26" x 3/8" (660 x 9 mm) (N,P) 28" x 3/8" (711 x 9 mm) (N,P)	28" x 3/8" (711 x 9 mm) (P) 30" x 3/8" (762 x 9 mm) (N,P)
<b>BLADES</b>				
<b>Scrapers</b>	Adjustable rigid scrapers Bearing trash guards (optional) Bearing wear plates (optional)		Wide-pan, mouldboard style, heavy-duty Bearing trash guards (optional) Bearing wear plates (optional)	
<b>Tires</b>	4 11L x 15 FI LR 'D'			
<b>Depth Control</b>	Single 4" x 12" (102 x 305 mm) hydraulic cylinder comes with depth control segments Optional single point hydraulic depth control			

<sup>1</sup>Based on standard disc option

<sup>2</sup>Depends on working depth, soil type, field speed, etc.

NOTE: Specification are correct at time of publishing and are subject to change



# TILLAGE USAGE REFERENCE CHARTS

## FURY - USAGE REFERENCE TABLE

		SECONDARY						PRIMARY									COMMERCIAL		
		LIGHT			STANDARD			STANDARD			MEDIUM			HEAVY			HEAVY		
		• Field leveling • Seedbed prep			• Light stubble cultivation • Spring weed knockdown			• Heavy stubble tillage • Reclaiming wet spots • Field edge clean-up			• Extreme corn/cane residue • Lighter rocky conditions			• Hayland reclamation • Heavier rocky conditions			• Fenceline reclamation • Land breaking • Construction site prep		
		LIGHT SOIL	MEDIUM SOIL	HEAVY SOIL	LIGHT SOIL	MEDIUM SOIL	HEAVY SOIL	LIGHT SOIL	MEDIUM SOIL	HEAVY SOIL	LIGHT SOIL	MEDIUM SOIL	HEAVY SOIL	LIGHT SOIL	MEDIUM SOIL	HEAVY SOIL	LIGHT SOIL	MEDIUM SOIL	HEAVY SOIL
FURY R	20" Disc	Orange	Orange	Orange	Green	Green	Green	Green	Green	Green	Green	Green	Green	Green	Green	Green	Red	Red	Red
	22" Disc	Orange	Orange	Orange	Green	Green	Green	Green	Green	Green	Green	Green	Green	Green	Green	Green	Red	Red	Red
FURY HS	22" Disc	Green	Green	Green	Green	Green	Green	Green	Green	Green	Green	Green	Green	Orange	Red	Red	Red	Red	Red
	24" Disc	Orange	Orange	Orange	Green	Green	Green	Green	Green	Green	Orange	Green	Green	Red	Red	Red	Red	Red	Red

## TANDEM DISC - USAGE REFERENCE TABLE

		SECONDARY						PRIMARY									COMMERCIAL		
		LIGHT			STANDARD			STANDARD			MEDIUM			HEAVY			HEAVY		
		• Field leveling • Seedbed prep			• Light stubble cultivation • Spring weed knockdown			• Heavy stubble tillage • Reclaiming wet spots • Field edge clean-up			• Extreme corn/cane residue • Lighter rocky conditions			• Hayland reclamation • Heavier rocky conditions			• Fenceline reclamation • Land breaking • Construction site prep		
MODEL		LIGHT SOIL	MEDIUM SOIL	HEAVY SOIL	LIGHT SOIL	MEDIUM SOIL	HEAVY SOIL	LIGHT SOIL	MEDIUM SOIL	HEAVY SOIL	LIGHT SOIL	MEDIUM SOIL	HEAVY SOIL	LIGHT SOIL	MEDIUM SOIL	HEAVY SOIL	LIGHT SOIL	MEDIUM SOIL	HEAVY SOIL
TD400		Green	Green	Green	Green	Green	Green	Orange	Orange	Red	Red	Red	Red	Red	Red	Red	Red	Red	Red
TD500N/500		Green	Green	Green	Green	Green	Green	Green	Orange	Orange	Red	Red	Red	Red	Red	Red	Red	Red	Red
TD600N/600		Orange	Orange	Orange	Green	Green	Green	Green	Green	Green	Orange	Orange	Orange	Red	Red	Red	Red	Red	Red
TD700		Orange	Orange	Orange	Orange	Orange	Orange	Green	Green	Green	Green	Green	Green	Green	Green	Green	Red	Red	Red

## VIKING - USAGE REFERENCE TABLE

		SECONDARY						PRIMARY									COMMERCIAL		
		LIGHT			STANDARD			STANDARD			MEDIUM			HEAVY			HEAVY		
		• Field leveling • Seedbed prep			• Light stubble cultivation • Spring weed knockdown			• Heavy stubble tillage • Reclaiming wet spots • Field edge clean-up			• Extreme corn/cane residue • Lighter rocky conditions			• Hayland reclamation • Heavier rocky conditions			• Fenceline reclamation • Land breaking • Construction site prep		
		LIGHT SOIL	MEDIUM SOIL	HEAVY SOIL	LIGHT SOIL	MEDIUM SOIL	HEAVY SOIL	LIGHT SOIL	MEDIUM SOIL	HEAVY SOIL	LIGHT SOIL	MEDIUM SOIL	HEAVY SOIL	LIGHT SOIL	MEDIUM SOIL	HEAVY SOIL	LIGHT SOIL	MEDIUM SOIL	HEAVY SOIL
Angle - 0°		Orange	Orange	Orange	Green	Green	Green	Green	Green	Green	Orange	Red	Red	Red	Red	Red	Red	Red	Red
Angle - 4°		Orange	Orange	Orange	Green	Green	Green	Green	Green	Green	Orange	Red	Red	Red	Red	Red	Red	Red	Red
Angle - 8°		Green	Green	Green	Green	Green	Green	Orange	Orange	Orange	Red	Red	Red	Red	Red	Red	Red	Red	Red
Angle - 12°		Green	Green	Green	Green	Green	Green	Orange	Orange	Orange	Red	Red	Red	Red	Red	Red	Red	Red	Red

## OFFSET DISC - USAGE REFERENCE TABLE

		SECONDARY						PRIMARY									COMMERCIAL		
		LIGHT			STANDARD			STANDARD			MEDIUM			HEAVY			HEAVY		
		• Field leveling • Seedbed prep			• Light stubble cultivation • Spring weed knockdown			• Heavy stubble tillage • Reclaiming wet spots • Field edge clean-up			• Extreme corn/cane residue • Lighter rocky conditions			• Hayland reclamation • Heavier rocky conditions			• Fenceline reclamation • Land breaking • Construction site prep		
MODEL		LIGHT SOIL	MEDIUM SOIL	HEAVY SOIL	LIGHT SOIL	MEDIUM SOIL	HEAVY SOIL	LIGHT SOIL	MEDIUM SOIL	HEAVY SOIL	LIGHT SOIL	MEDIUM SOIL	HEAVY SOIL	LIGHT SOIL	MEDIUM SOIL	HEAVY SOIL	LIGHT SOIL	MEDIUM SOIL	HEAVY SOIL
SD550		Orange	Orange	Orange	Green	Green	Green	Green	Orange	Orange	Red	Red	Red	Red	Red	Red	Red	Red	Red
SD650		Orange	Orange	Orange	Green	Green	Green	Green	Green	Green	Orange	Orange	Orange	Red	Red	Red	Red	Red	Red

■ IDEAL CONDITIONS   
 ■ USE CAUTION   
 ■ NOT RECOMMENDED



©2026 Buhler Versatile Inc. All Rights Reserved.  
versatile-ag.com  
Ref: 102025  
Edition: 26-1

Illustrations, photographs and specifications in this brochure are based on the latest information at the time of publication. Design and specification are subject to change without notice; please contact your local dealer for product information and availability.

"Versatile", the Versatile logo and all other Versatile related marks, images and symbols are the exclusive property and/or trademarks of Buhler Versatile Inc.